



LONGHOUSE

S T U D I O S



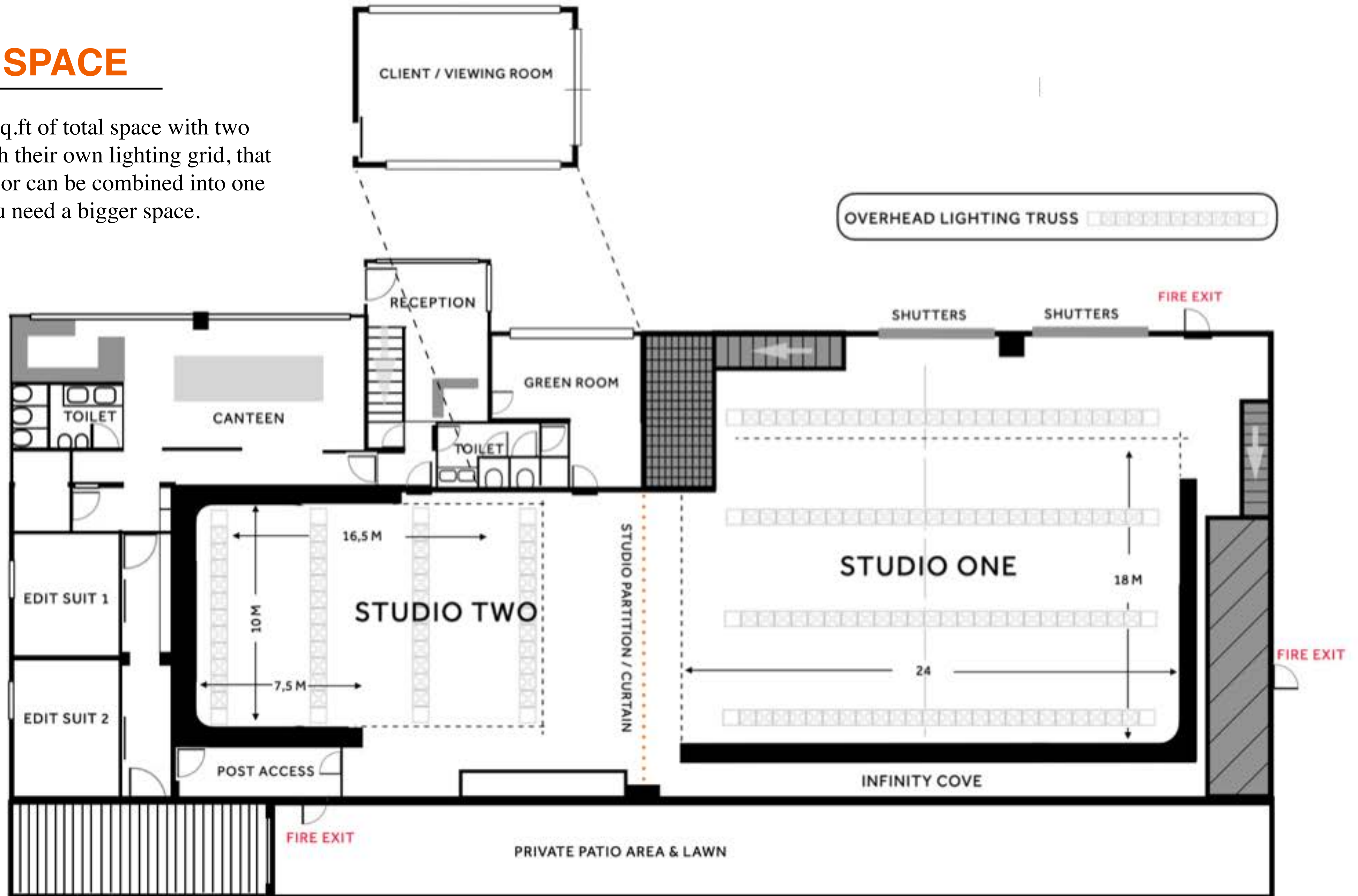
ABOUT US

Longhouse Studios - the perfect North West filming and photography location for stills, editorial, films and commercials.

A versatile space, where the only limit is your imagination. From delicious Christmas feasts on never ending tables, to families flying high in hot air balloons, high fashion photography with celebrities and remote luscious jungle landscapes. Our studios located in Media City can be transformed to fit your creative briefs.

OUR SPACE

We have over 10,000 sq.ft of total space with two separate studios both with their own lighting grid, that are available separately, or can be combined into one larger stage if you need a bigger space.



A wide-angle photograph of a large, empty studio. The room features a curved infinity wall that creates a seamless, continuous space. The ceiling is high and industrial, with several white metal lighting rigs suspended from it. These rigs hold various studio lights, including spotlights and softboxes. The floor is a light-colored, polished surface, possibly concrete or wood, with a prominent yellow stripe running across it. The overall atmosphere is clean, professional, and ready for production.

STUDIO ONE

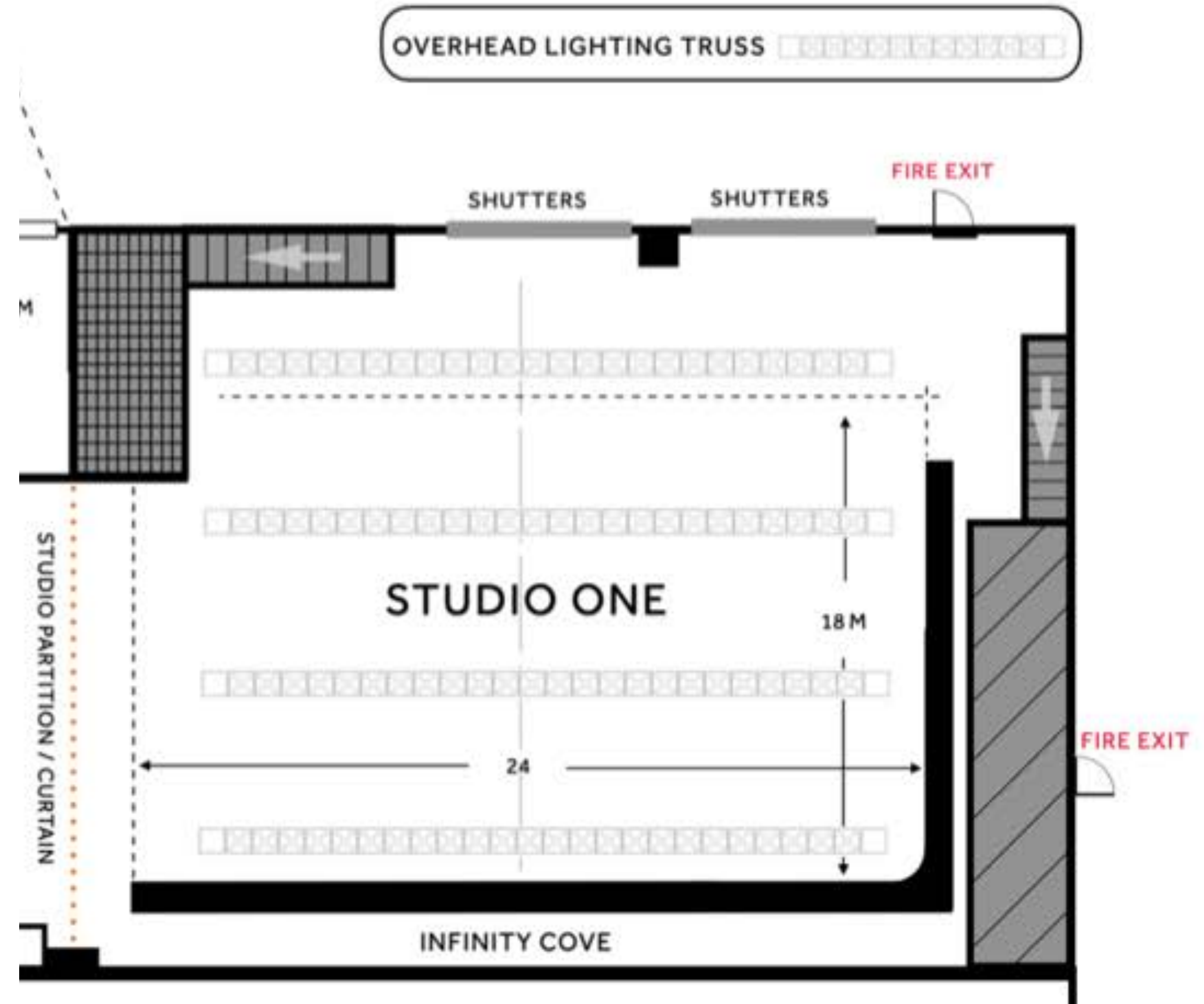
A 7,000 sq.ft studio with a large
infinity curve.

STUDIO ONE

One of the largest studios in Manchester, it's ideal for large scale productions and set builds. A space where your vision can come to life.

SPECIFICATIONS

- 7,000 sq.ft production space
- Infinity curve
- Light rigging
- 63-amp power outlets
- 13 - amp sockets
- Two full height loading bay doors
- Secure parking
- Wi-Fi
- Electricity usage included



A wide-angle shot of a professional studio. The room is dominated by a large, white, curved infinity wall that reflects the overhead lighting. The ceiling is dark, with several long, silver metal lighting trusses suspended from it. These trusses hold multiple studio lights, including spotlights and softboxes. The floor is a dark, polished concrete. The overall atmosphere is clean, professional, and well-lit.

STUDIO TWO

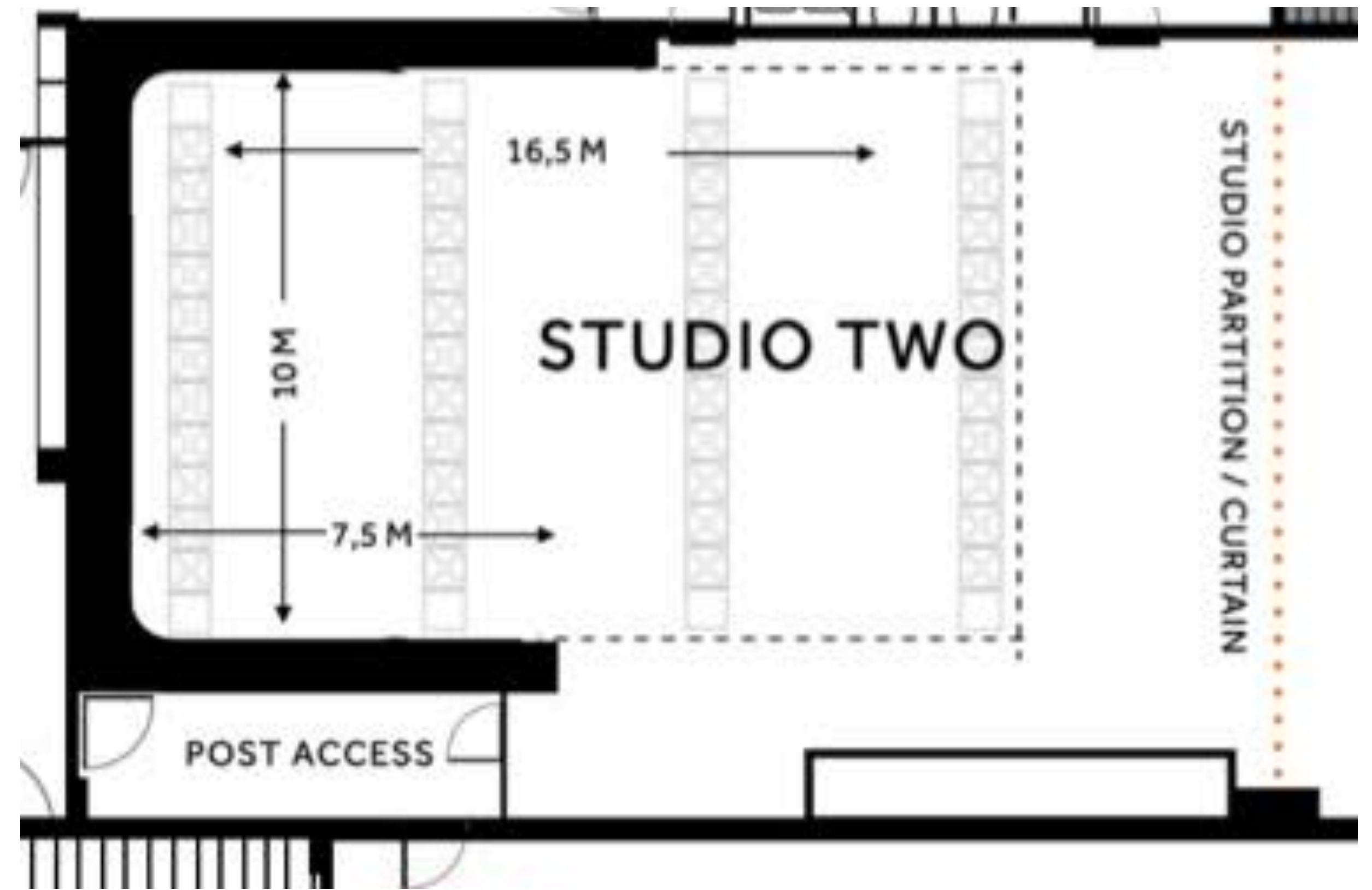
A 2,500 sq.ft studio with a three
sided infinity curve.

STUDIO TWO

A smaller, but no less mighty space. Perfect for e-commerce shoots and small set builds. A blank canvas ready to be transformed.

SPECIFICATIONS

- 2,500 sq.ft production space
- 3 sided Infinity curve
- Light rigging
- 63-amp power outlets
- 13 - amp sockets
- Two full height loading bay doors
- Secure parking
- Wi-Fi
- Electricity usage included

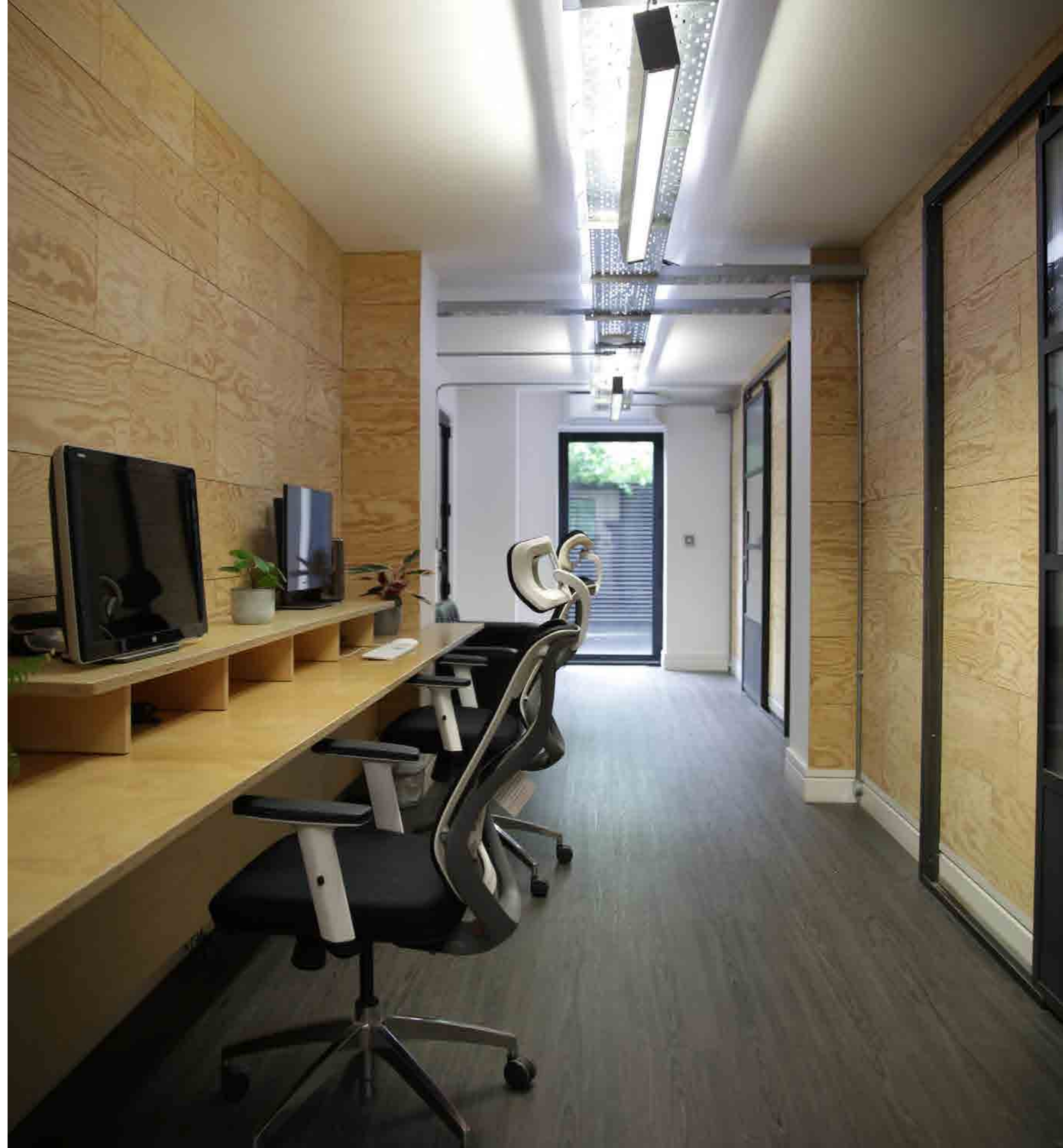


FACILITIES

In addition to our studio spaces, we've lots of facilities to make sure you have everything you need so that your shoot runs as smoothly as possible:

- Green room / Dressing room / Directors room
- Large meeting room (overlooking the studio)
- Kitchen and dining area
- On-site parking (60 spaces)
- Props collection
- Edit suites

With over 20 years of production experience, we've curated a trusted list of local partners too - from caterers to equipment hire, camera people, make-up artists, set design and builders.











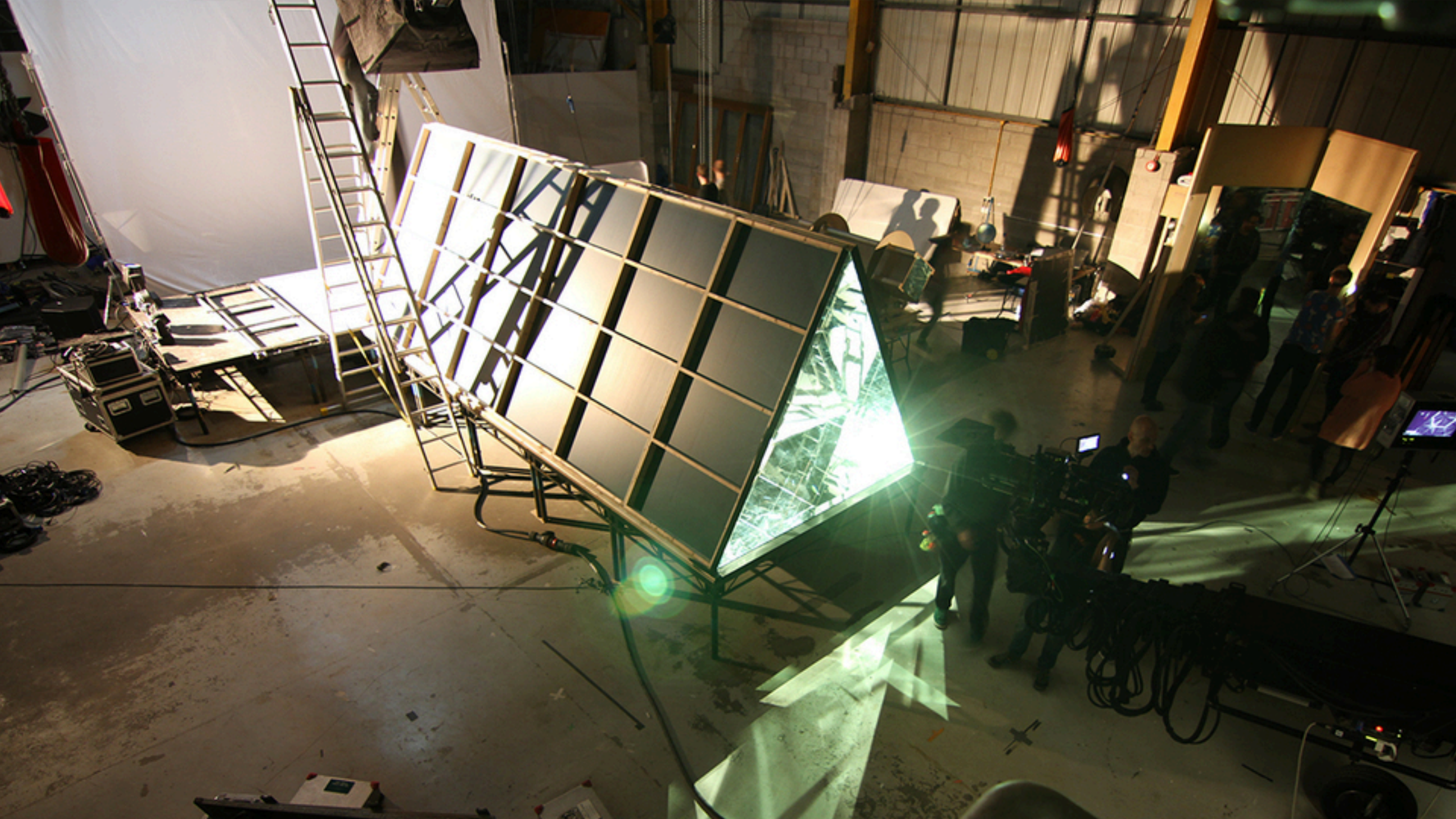


LOCATION

Located in lively Media City, our welcoming space has step free access, plenty of on site parking and is a stones throw away from local supermarkets, bars and eateries.

The Longhouse
Michigan avenue
Media City
M50 2GY

Our space is self contained ensuring privacy and security.











CONTACT US

**If you're looking for a space for an upcoming production
or photography shoot we'd love to hear from you!**

Gabby@chief.tv

+44 (0)161 832 6001